




MAJORELLE



Majorelle, a distinct blue found in the traditional doorways of Marrakech, evokes a sense of active tranquility. Its deep hue soothes and enlivens, while reflecting the refined flourish of Moroccan artistry.

Inspired by the expression of this rich indigo pigment, we invite you to discover the artistry of spa with products and techniques tailored to your personalized expression—an essential luxury along the path to be well.





Custom Massage

60 min

Our skilled therapists specialize in a broad spectrum of services including deep tissue and reflexology, myofascial release, reiki and more. Let us know what you have in mind, and we will be happy to align the expertise of our staff with your specific preferences, either here in Majorelle, or in the comfort of your hotel room.

FOCUS:

Swedish

relaxation massage with long glided hand strokes to relieve tension and stimulate circulation

Deep Tissue

therapists use thumbs , elbows, and forearms to relieve tension

Prenatal

focuses on the special needs of the mother-to-be as she undergoes changes during pregnancy

Table Thai

blending the unique compression and stretching poses of traditional thai massage, in this dynamic session you experience the benefits of movement and massage

Reflexology

stimulates specific pressure points on the feet, hands, and ears to promote healing and pain relief throughout the body

Lymphatic Drainage

encourages the movement of lymphatic fluid throughout the body and promotes detoxification

Craniosacral Therapy

relieves tension in the head, neck, and spinal column while balancing the central nervous system

Reiki Therapy

an energy healing technique that guides the flow of energy through the body using gentle hand movements

Custom Facial

60 min

Tailoring each facial to address the variations of your skin, we nourish and reveal your unique beauty by promoting your skin's natural health and radiance.

FOCUS:

Redness and Inflammation

aloe gel mask, plant stem cell serum

Aging Skin

argan plant stem cells, Matrixyl® synthe'6®, Tri-Retinol

Acne and Hormone Imbalances

pumpkin enzymes, moss extract, alpine willow and rosemary

Sensitive and Rosacea-Prone Skin

calendula cream, aloe gel mask

Sun Damage

brightening enzyme peel, vitamin C15 repair serum

Men's Skincare

daily defense moisturizer, pear fig polishing enzyme peel

Couture | Tailored Time

3 or 4 hours

This made-to-measure experience satisfies your individual needs.

A preliminary consultation ensures our expert therapists understand and appreciate your preferences, enabling them to create unique treatment protocols to align with your specific needs and maximize treatment results.



B O D Y T R E A T M E N T S

Atmospheric River Massage

60 min

A Lighter Lymphatic Treatment

FOCUS:

intensely hydrating; purifying; detoxifying

KEY BOTANICALS:

rosemary, juniper, and thyme

Funk Zone Massage

60 min

Soothing Swedish Massage

FOCUS:

sun damage antidote; skin protection this treatment is safe and soothing for prenatal care

KEY BOTANICALS:

sandalwood, kukui nut, vanilla, sweet orange

Quake Rescue Massage

60 min

Cross Stretching and Joint Release

FOCUS:

stress recovery; immune function boost; improved sleep

KEY BOTANICALS:

bergamot, frankincense, sandalwood, and cedar

Chakra Meditation Massage

60 min

Guided Meditation and Gentle Reflexology Massage

FOCUS:

balance; energy flow; meditation

KEY BOTANICALS:

lavender, citrus, and peppermint

SPECIALTY WELLNESSES

Aroma Design Consultation | 15 min

Guided Meditation | 60 min

Personal Training | 60 min

Private Yoga | 60 min

GROOMING

Hair Blowout

Hair Blowout + Styling

In-Room Massages are possible upon request, subject to availability.

Bath Butler | 30 min

Add a magnesium soak prior to your in-room massage



Hours of Operation

Daily 10:00 am – 6:00 pm, or by special request

Appointments

Appointments must be made a minimum of 24 hours in advance to enable us to accommodate your needs and schedule. If you are not a guest of the hotel, we require a credit card number to hold your reservation. Spa guests must be at least 18 years old.

Cancellations

As a courtesy to other guests and our therapists, we require a minimum 24-hour notice for cancellations or rescheduling. Failure to do so (including no-shows) will result in the full charge of treatments.

Service Charge

At the time of check-out a 22% service charge will be applied to the cost of all services. Two percent of the service charge is allocated to the hotel, and the remainder is allocated among the treatment staff that served you during your visit. Additional gratuities may be provided at your discretion.

Special Requests

The Majorelle treatment team has diverse expertise and training. If you are interested in a treatment or service not listed in the menu, we will make every effort to fulfill your special request.

Medical Conditions

Please inform us of any medical conditions, medications, allergies, or injuries that may affect the safety or quality of your experience. We will be happy to recommend ways to tailor treatments to address your specific circumstances.

What to Wear

We will provide you with robes and slippers. To maintain your privacy therapists will cover you appropriately during your treatments. Facial coverings are required while in the spa.

Arrival

Please arrive at least 20 minutes prior to your scheduled appointment time to ensure you have adequate time to prepare and begin to relax before your treatment. In respect of all guests treatments will begin and end at their scheduled times.

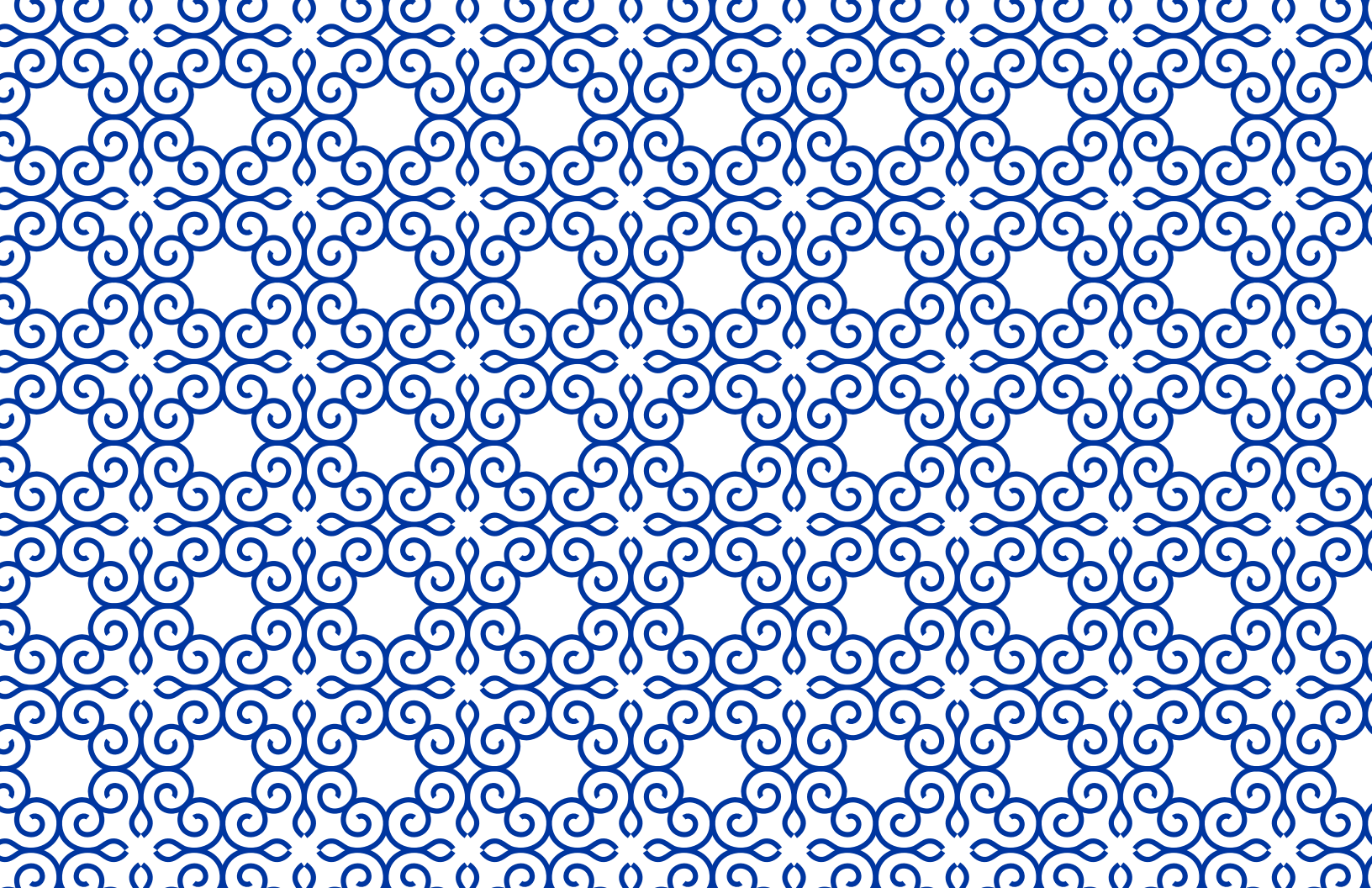
Tranquility

We strive to provide a peaceful setting for all our guests, and request that you refrain from using cell phones or other electronic devices while in the spa. Please respect all guests' right to privacy and serenity.

Valuables/Jewelry

For your comfort we suggest that you not bring or wear valuables while using our facilities, we cannot assume liability for the loss of any item.





S I G N A T U R E E X P E R I E N C E S

Custom Massage.....	60 min / \$245
Custom Facial.....	60 min / \$245
Coutour Tailored Time	3 hrs / \$600; 4 hrs / \$800
Custom Couples Massage.....	60 min / \$490

B O D Y T R E A T M E N T S

Atmospheric River Massage.....	60 min / \$245
Funk Zone Massage.....	60 min / \$245
Quake Rescue Massage.....	60 min / \$245
Chakra Meditation Massage	60 min / \$245

S P E C I A L T Y W E L L N E S S

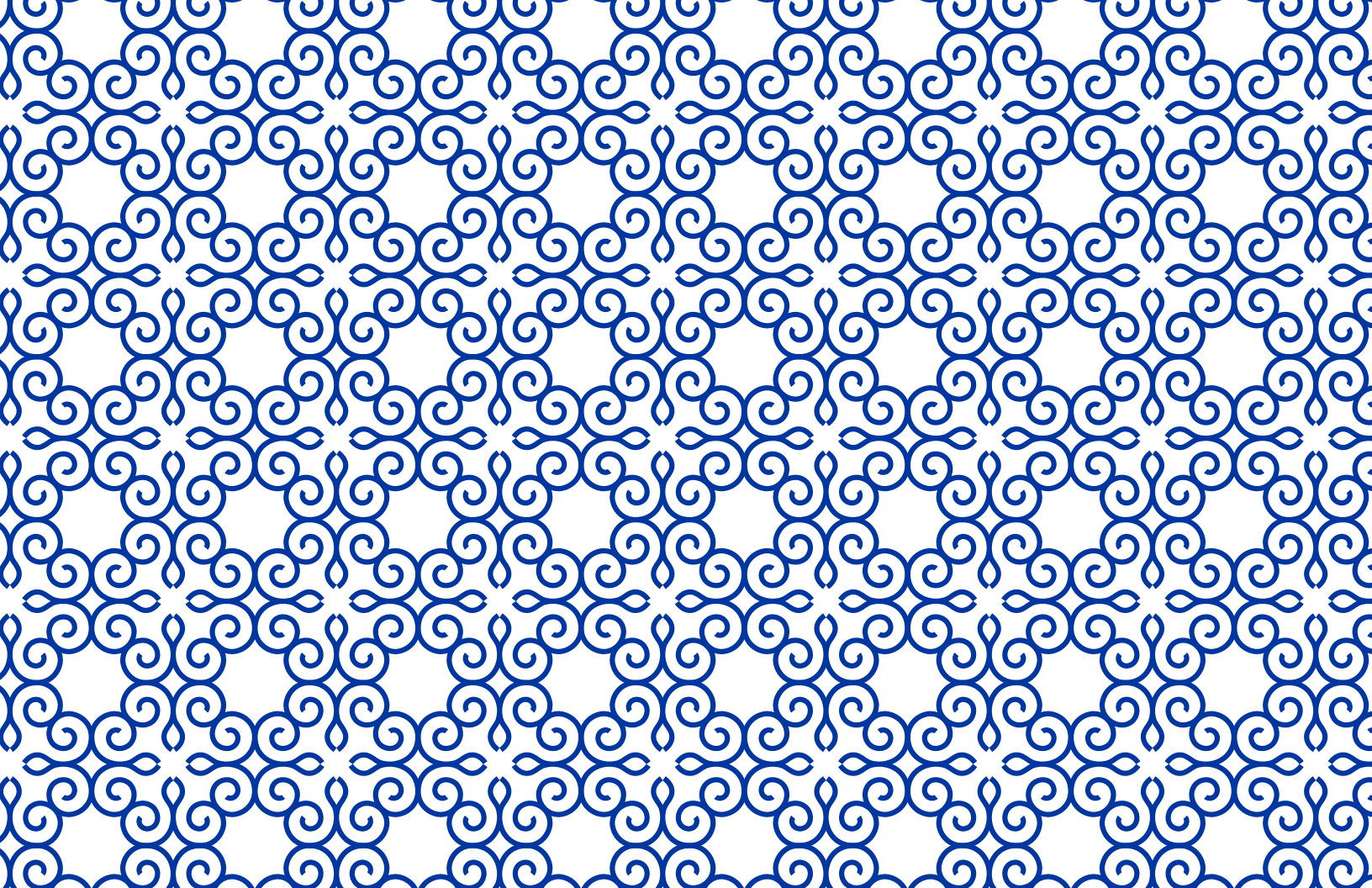
Aromatherapy Design Consultation begins at.....	\$35
Private Yoga(up to four).....	60 min / \$200
Guided Meditation	60 min / \$225

G R O O M I N G

Hair Blowout.....	\$100
Hair Blowout + Styling.....	\$150

At the time of check-out a 22% service charge will be applied to the cost of all services.

Two percent of the service charge is allocated to the hotel, and the remainder is allocated among the treatment staff that served you during your visit. Additional gratuities may be provided at your discretion.



The Secret to Your Well-Being

\$600 per month | \$245 initiation fee | Additional Members: \$500 per month

Add the relaxing, rejuvenation of Majorelle into your daily routine with the Majorelle Membership.

With your membership, you receive:

Two 60-minute Custom treatments per month

Treatments do not rollover from month to month. Two Custom 60-minute treatments may be exchanged for a longer or enhanced treatment. Treatments are non-transferrable.

20% off additional treatments and retail

Member must pay for discount to apply.

Access to Tan-Tan pool

Not applicable on holiday weekends or Saturdays in July and August.

10 guest passes for pool and fitness center per year

Additional passes may be purchased for \$30 per pass, per day.

Complimentary fitness center access

\$10 daily valet

15% off Best Flexible Rate for guestrooms

Applicable with valid member booking code. Member must pay for discounts to apply.

15% off at all Food + Beverage Venues

Valid for up to 6 guests. Member must pay for discounts to apply. Not applicable to memberships, retail purchases, or shipments from The Foley Food & Wine Society.

The background of the entire page is a repeating geometric pattern in blue lines on a white background. The pattern consists of interlocking squares, each containing a four-pointed star or floral-like design. The lines are of uniform thickness, creating a clean, modern aesthetic.

Terms + Conditions

Members and guests must be 18+

Billing occurs and membership begins on the first of every month.

Mid-month sign ups will begin the first of the following month.

Membership card must be shown for discounts or access to apply.

Member must pay entire check with credit card attached to their membership to receive discount.

Membership may be paused for up to 90 days, one time per year.

Membership may be canceled at any time after initial membership term with 30 days notice.

Once canceled, an initiation fee will be due when restarting the membership.

